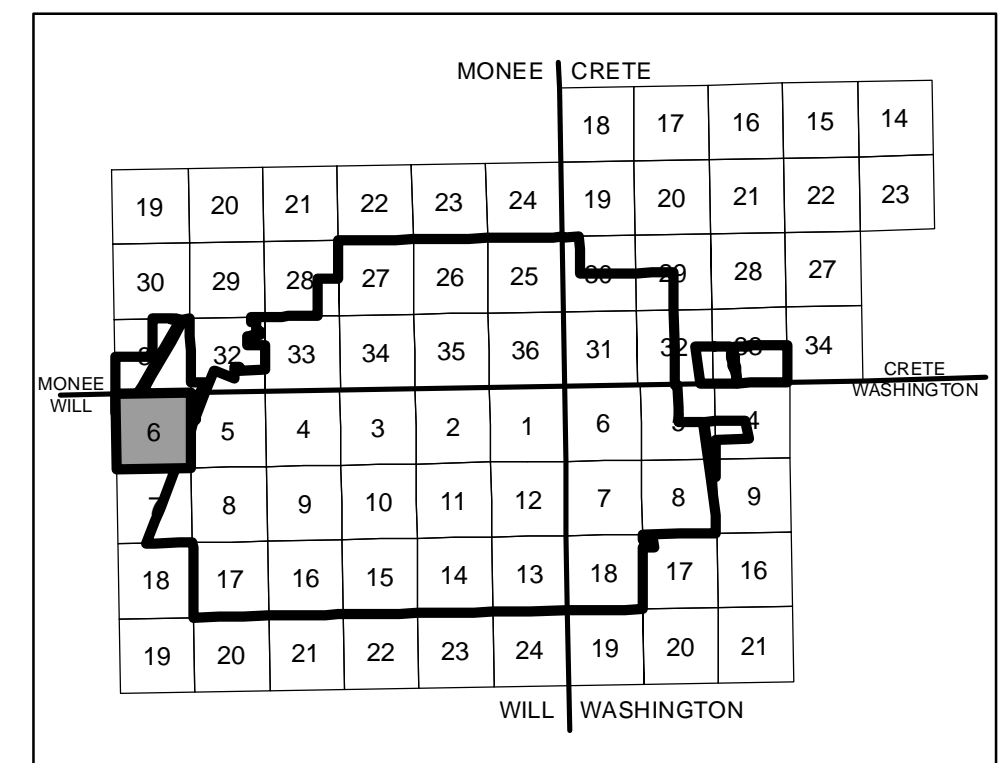


**PRELIMINARY
DRAFT**

LEGEND

- INAUGURAL SITE BOUNDARY
- ULTIMATE SITE BOUNDARY
- EXISTING INAUGURAL PARCELS IN FEE
- EXISTING ULTIMATE PARCELS IN FEE
- FUTURE INAUGURAL PARCELS IN FEE
- FUTURE ULTIMATE PARCELS IN FEE
- SUBJECT TO INTERNAL TRANSFER
- MISCELLANEOUS FEATURES
- SECTION LINES



KEY PLAN

Revision	
Date	

ILLINOIS DEPARTMENT
OF TRANSPORTATION

11A0141	06-46-Ex. A_Shts. 2016.mxd	Sec Scale Bar	
06/30/2016	06/30/2016	06/30/2016	06/30/2016
Layout	JLK	Drawn	JLK
Reviewed	DES	Reviewed	DES

HANSON
Professional Services Inc.

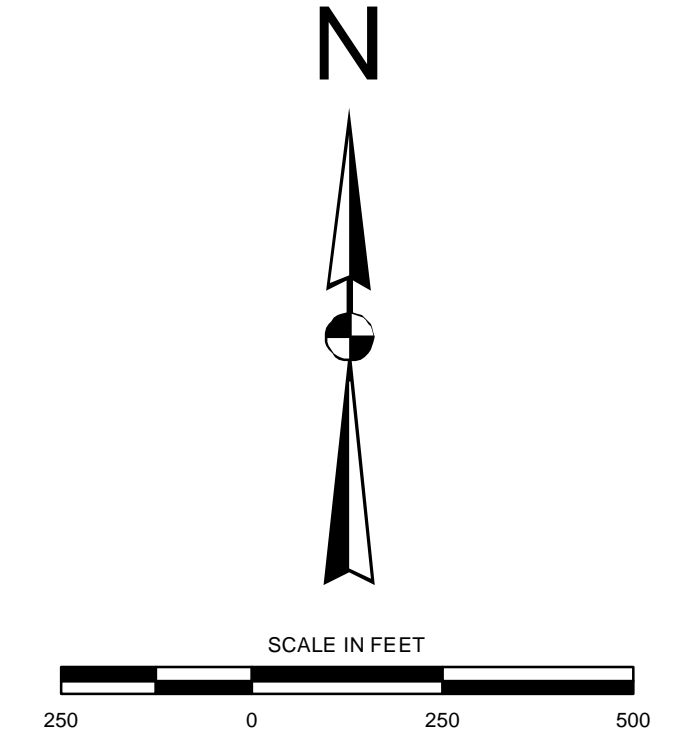
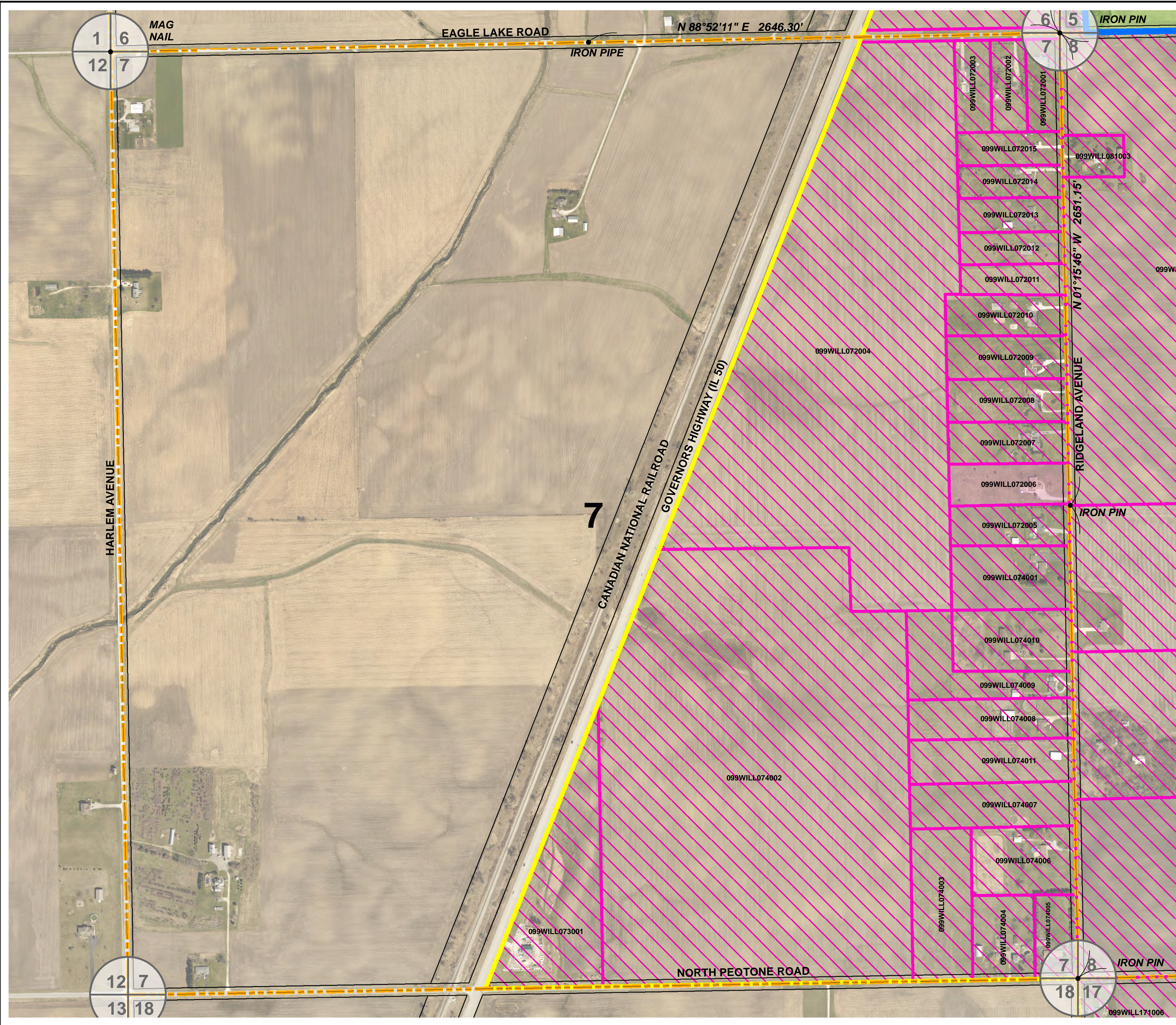
Hanson Professional Services Inc.
188.35 W. Creek Drive
Tinley Park, IL 60477
Offices Nationwide

EXHIBIT A

AIRPORT PROPERTY INVENTORY MAPS

SECTION 6
WILL TOWNSHIP
T33N, R13E, 3RD PM

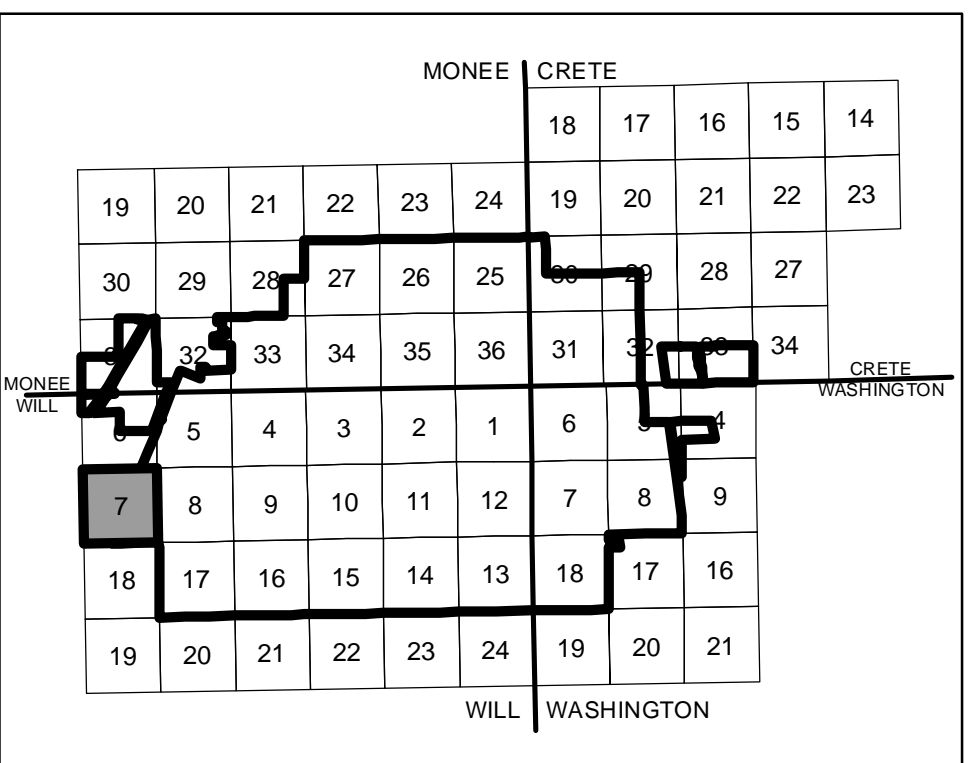
I:\07\p0101-2016\0001_Technical_Services\Technical_Services_Ex. A\GIS\2016_06_30_Contrib\A016-46-Ex. A_Shts. 2016.mxd



**PRELIMINARY
DRAFT**

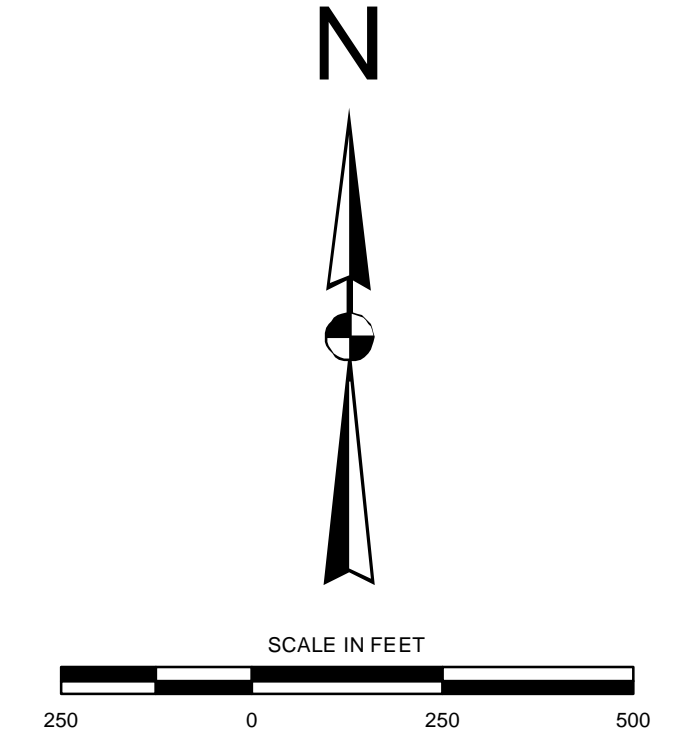
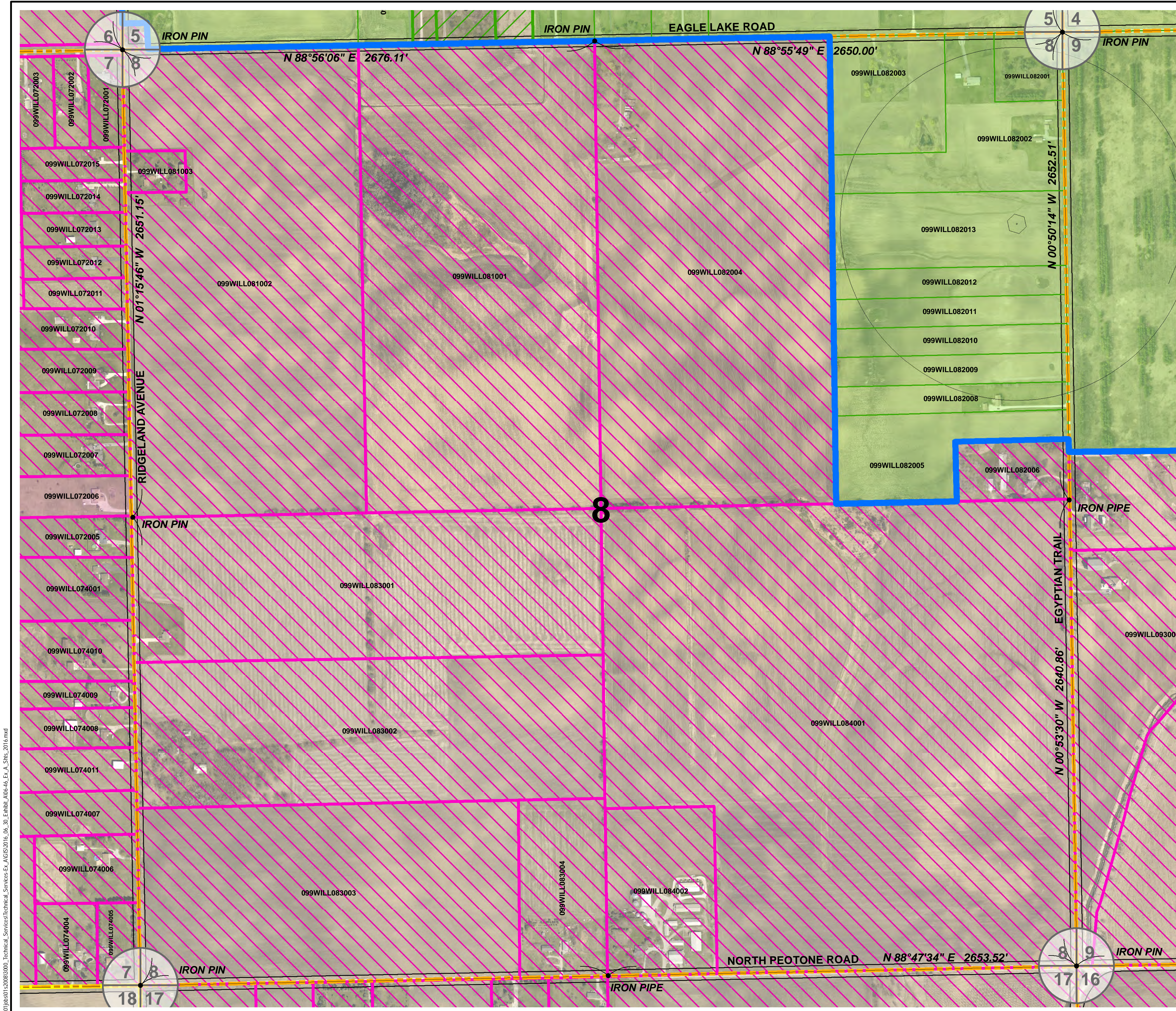
LEGEND

- INAUGURAL SITE BOUNDARY
- ULTIMATE SITE BOUNDARY
- EXISTING INAUGURAL PARCELS IN FEE
- EXISTING ULTIMATE PARCELS IN FEE
- FUTURE INAUGURAL PARCELS IN FEE
- FUTURE ULTIMATE PARCELS IN FEE
- SUBJECT TO INTERNAL TRANSFER
- MISCELLANEOUS FEATURES
- SECTION LINES



KEY PLAN

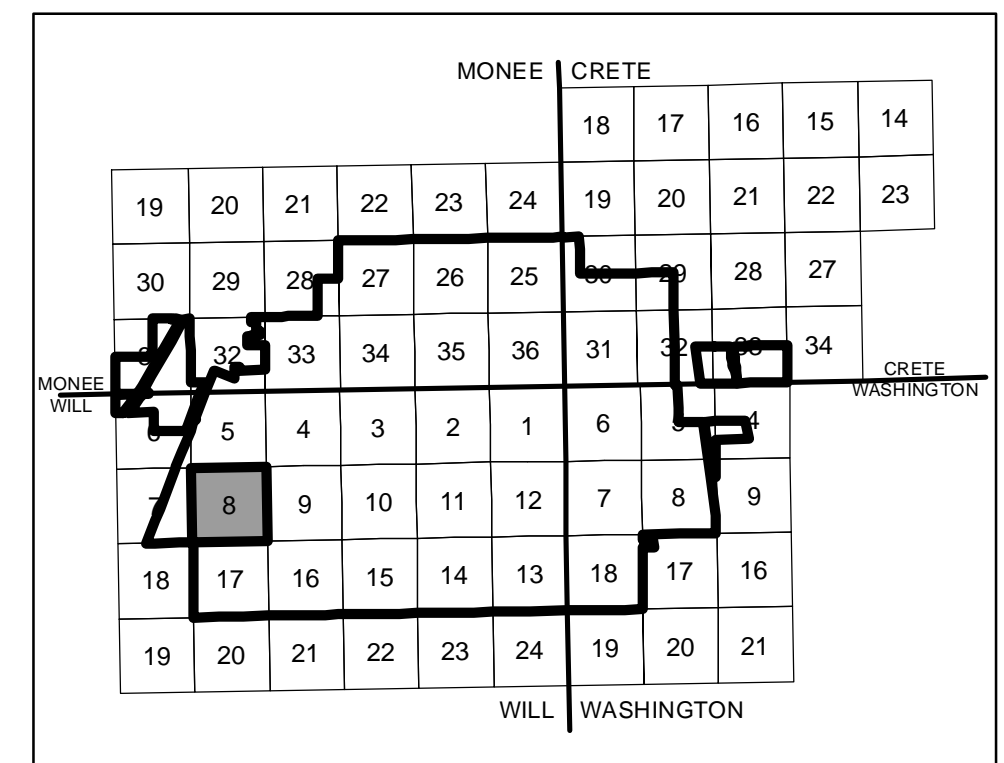
Date		Revision			
11A0141 06-46-Ex A_Shts_2016.mxd Sec Scale Bar 06/30/2016			Layout Drawn Reviewed	JLK JLK DES	06/30/2016 06/30/2016 06/30/2016
Hanson Professional Services Inc. 18835 W. Creek Drive Tinley Park, IL 60477 Offices Nationwide					
EXHIBIT A AIRPORT PROPERTY INVENTORY MAPS SECTION 7 WILL TOWNSHIP T33N, R13E, 3RD PM					
WILL 07 12 of 52 sheets					



**PRELIMINARY
DRAFT**

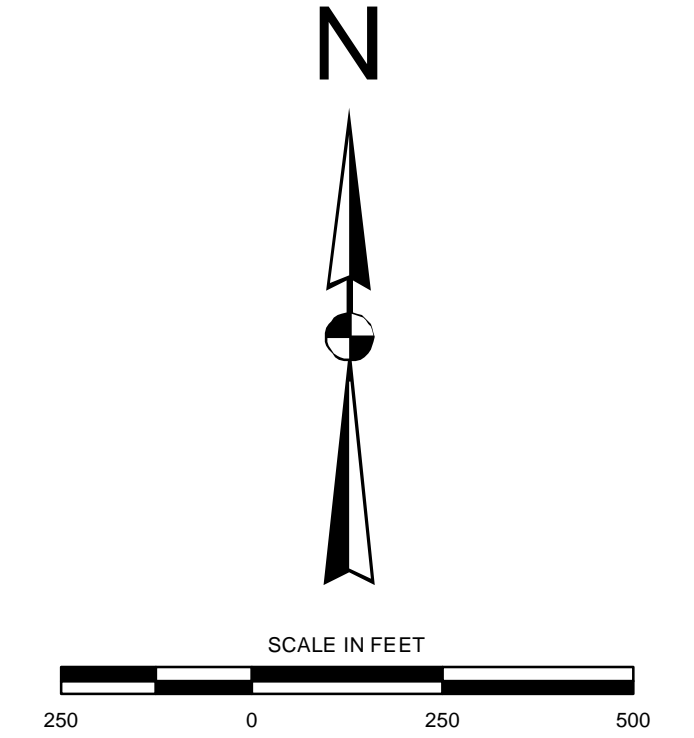
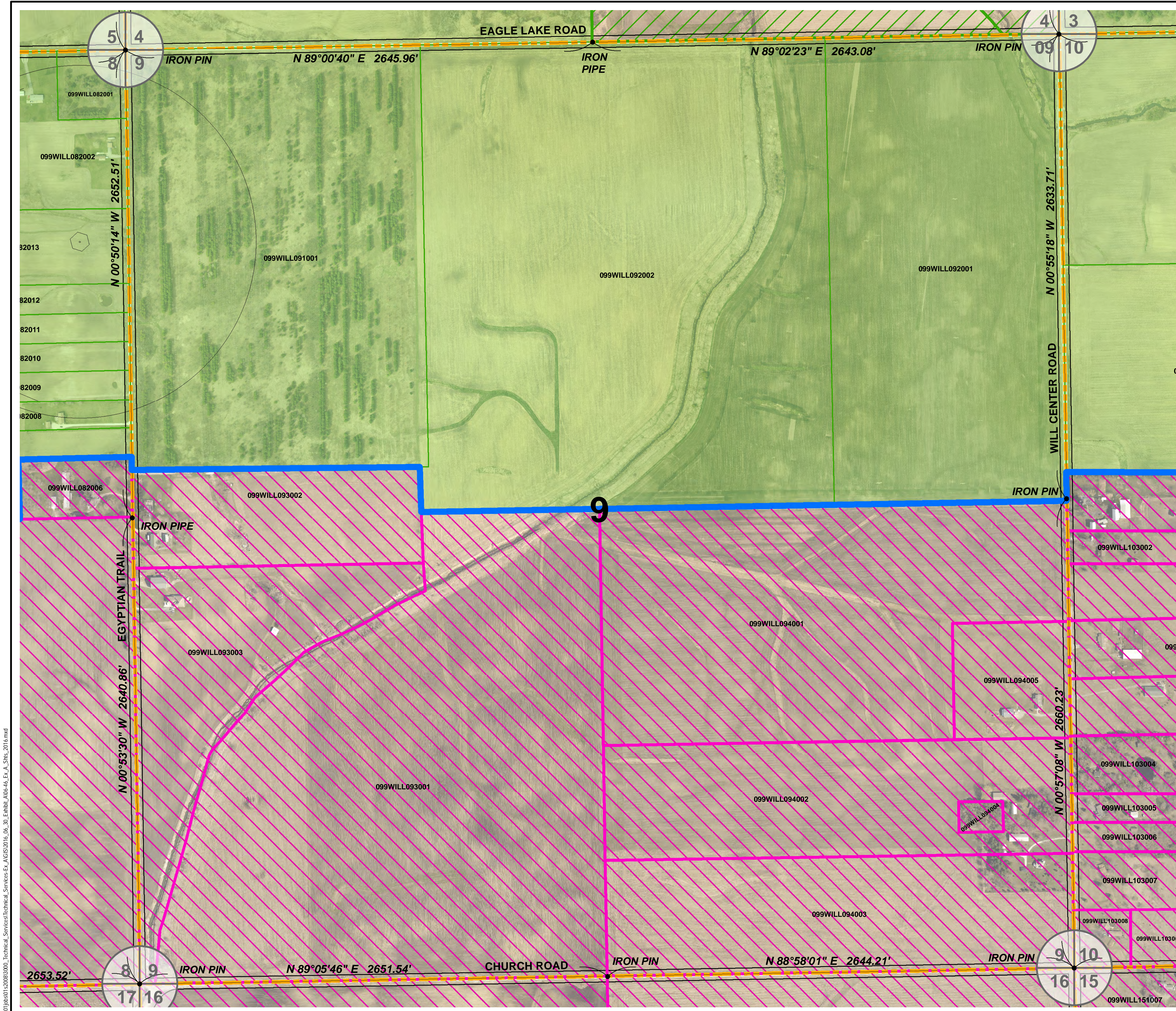
LEGEND

- INAUGURAL SITE BOUNDARY
- ULTIMATE SITE BOUNDARY
- EXISTING INAUGURAL PARCELS IN FEE
- EXISTING ULTIMATE PARCELS IN FEE
- FUTURE INAUGURAL PARCELS IN FEE
- FUTURE ULTIMATE PARCELS IN FEE
- SUBJECT TO INTERNAL TRANSFER
- MISCELLANEOUS FEATURES
- SECTION LINES



<p>11A0141 06-46-Ex-A-SHts-2016.mxd Sec Scale Bar 06/30/2016</p>	<p>11A0141 JLK 06/30/2016 JLK 06/30/2016 DES 06/30/2016</p>
<p>HANSON Hanson Professional Services Inc. Hanson Professional Services Inc. 18835 W. Creek Drive Tinley Park, IL 60477 Offices Nationwide</p>	
<p>EXHIBIT A AIRPORT PROPERTY INVENTORY MAPS SECTION 8 WILL TOWNSHIP T33N, R13E, 3RD PM</p>	
<p>WILL 08</p>	

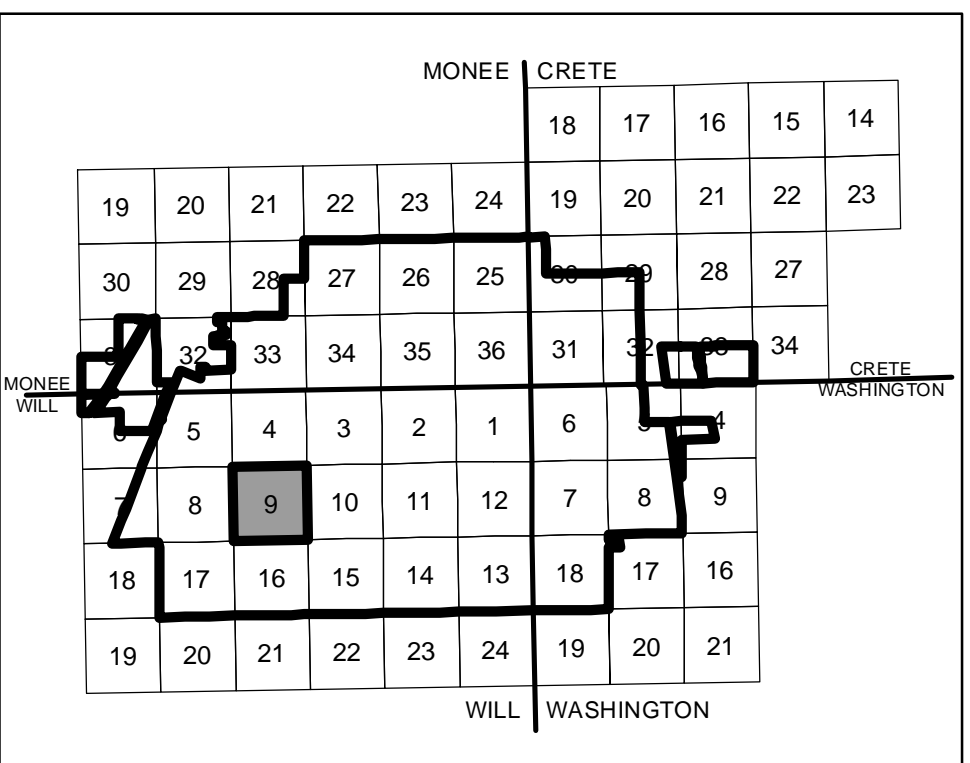
I:\07\08\01-2016\08000_Technical_Services\Ex-A\GIS\2016_06_30_Conbill_A016-46-Ex-A_SHts_2016.mxd



PRELIMINARY DRAFT

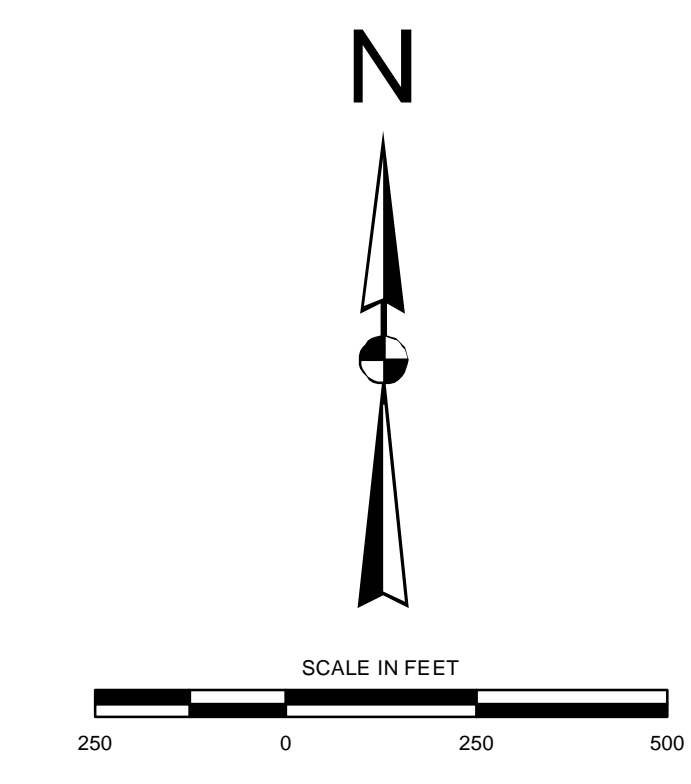
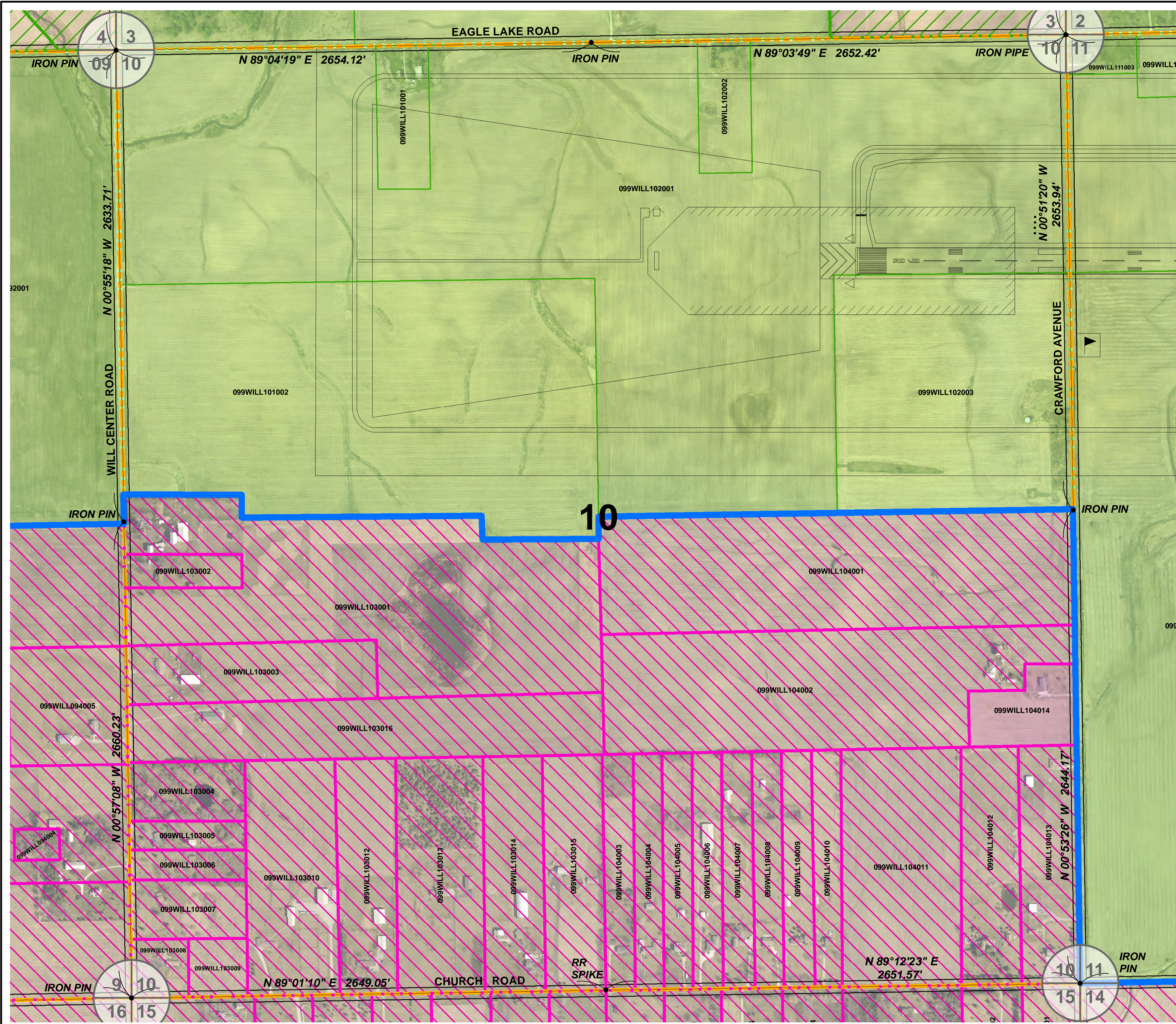
LEGEND

- INAUGURAL SITE BOUNDARY
- ULTIMATE SITE BOUNDARY
- EXISTING INAUGURAL PARCELS IN FEE
- EXISTING ULTIMATE PARCELS IN FEE
- FUTURE INAUGURAL PARCELS IN FEE
- FUTURE ULTIMATE PARCELS IN FEE
- SUBJECT TO INTERNAL TRANSFER
- MISCELLANEOUS FEATURES
- SECTION LINES



Revision	
Date	
11A0141	06/30/2016
06-46-Ex. A-SHs-2016.mxd	Sec Scale Bar
06/30/2016	06/30/2016
JLK	JLK
Drawn	Reviewed
DES	DES
 Hanson Professional Services Inc. 188.35 W. Creek Drive Tinley Park, IL 60477 Offices Nationwide	
EXHIBIT A AIRPORT PROPERTY INVENTORY MAPS SECTION 9 WILL TOWNSHIP T33N, R13E, 3RD PM	
WILL 09 14 of 52 sheets	

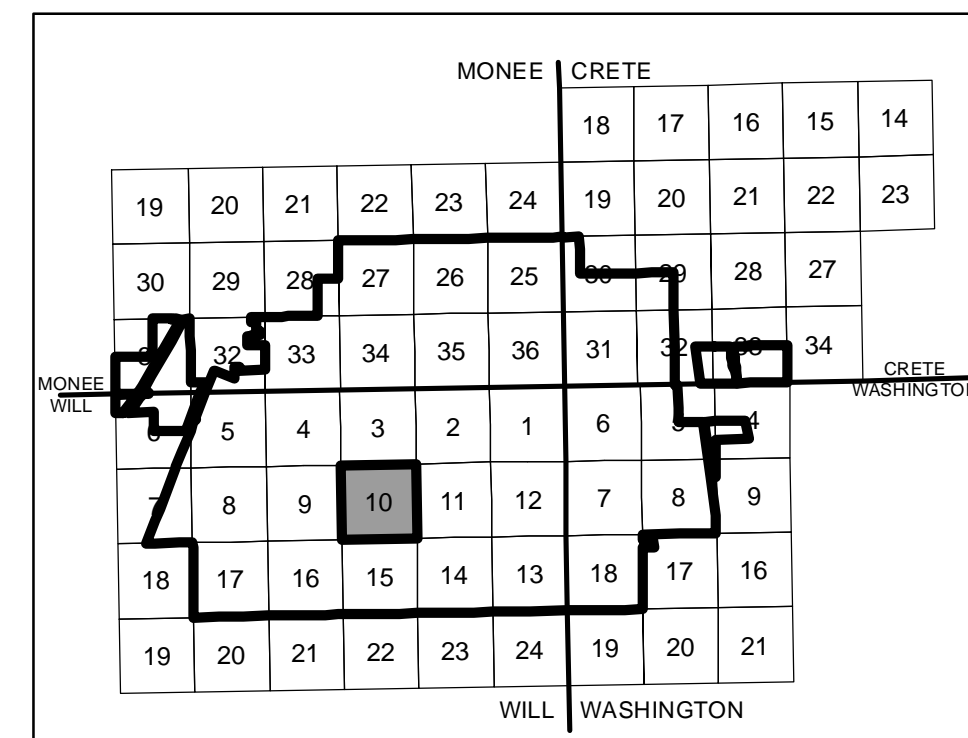
I:\07\p0101-20160001-Technical_Services\Ex. A\GIS\2016_06_30_Contrib\A016-46-Ex. A-SHs_2016.mxd



PRELIMINARY DRAFT

LEGEND

- INAUGURAL SITE BOUNDARY
- ULTIMATE SITE BOUNDARY
- EXISTING INAUGURAL PARCELS IN FEE
- EXISTING ULTIMATE PARCELS IN FEE
- FUTURE INAUGURAL PARCELS IN FEE
- FUTURE ULTIMATE PARCELS IN FEE
- SUBJECT TO INTERNAL TRANSFER
- MISCELLANEOUS FEATURES
- SECTION LINES



Revision	
Date	
ILLINOIS DEPARTMENT OF TRANSPORTATION	
SSA South Suburban Airport	
11A0141	06/30/2016
06-46-Ex A-SHts-2016.mxd	06/30/2016
Sec Scale Bar	
06/30/2016	
Layout	JLK
Drawn	JLK
Reviewed	DES
HANSON Hanson Professional Services Inc.	
Hanson Professional Services Inc. 188.35 W. Creek Drive Tinley Park, IL 60477 Offices Nationwide	
EXHIBIT A AIRPORT PROPERTY INVENTORY MAPS	
SECTION 10 WILL TOWNSHIP T33N R13E, 3RD PM	
WILL 10	
15 of 52 sheets	

I:\01\p0101-2016\0000_Technical_Services\Ex_A\GIS\2016_06_30_Enh\0101-2016-Ex-A_SHts_2016.mxd